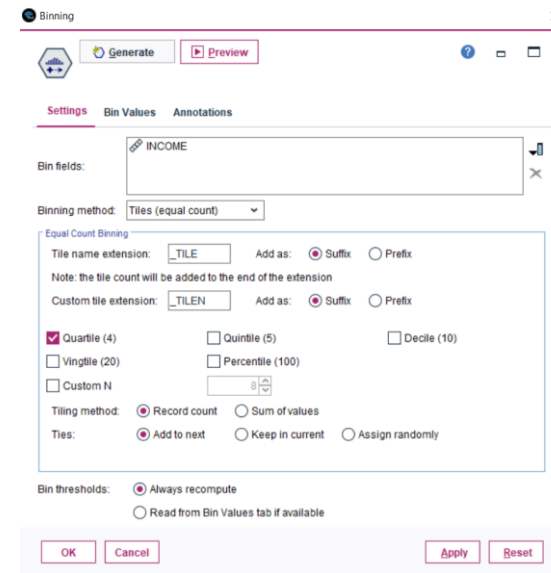
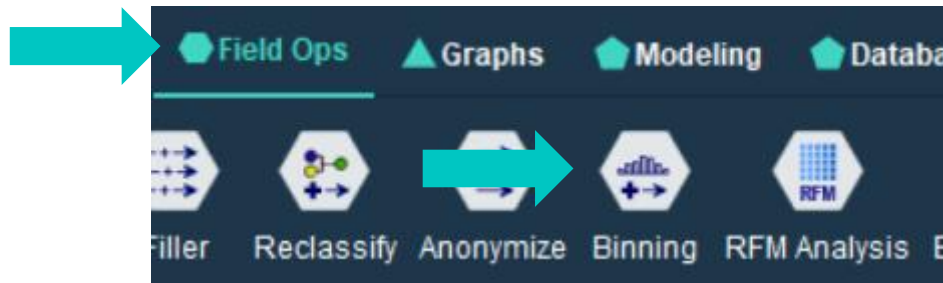


# Bin Data

Tech Tips - IBM SPSS Modeler

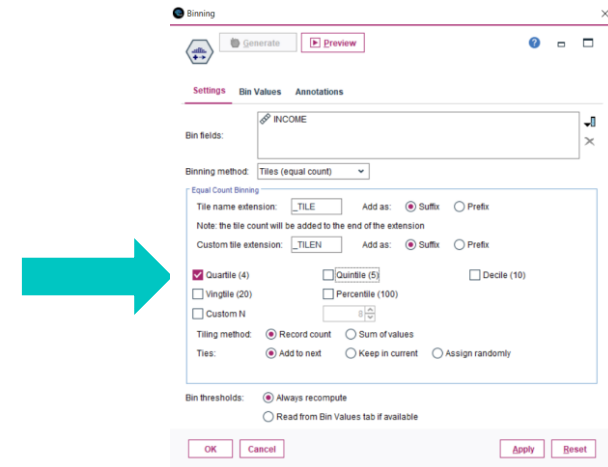
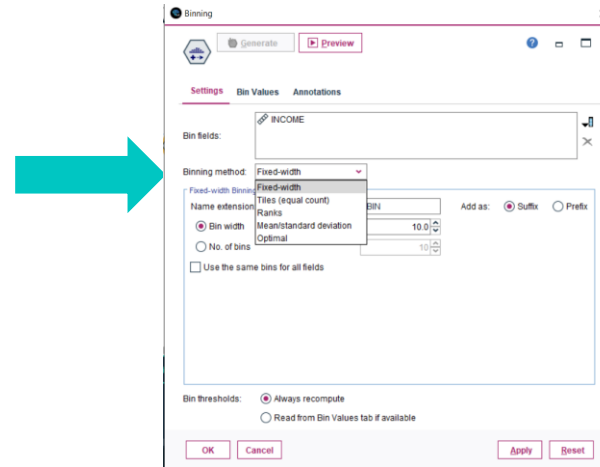
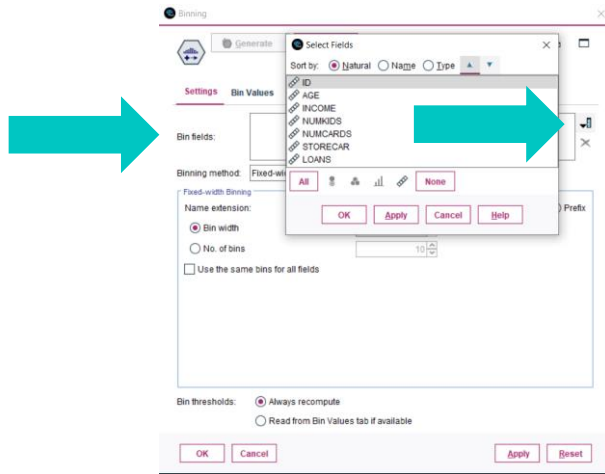
# Tech Tips – Bin Data

- Here’s a quick tip to bin or group your data in IBM SPSS Modeler.
- Sometimes you have numeric data that you want to split into groups. For example, we want to split income into tiles so that we can use it in modelling.
- The **Binning** node makes grouping data easy and is located on the **Field Ops** palette.



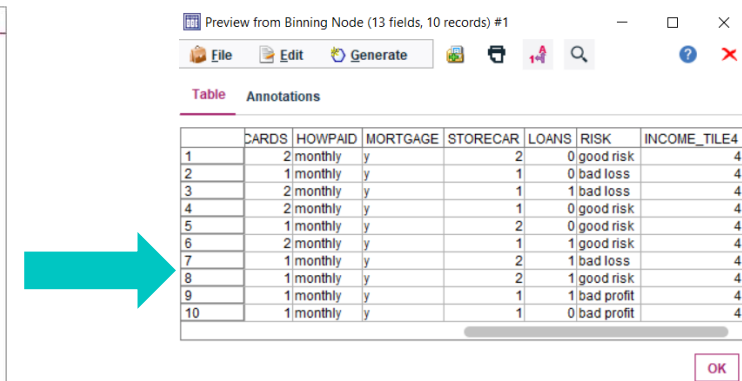
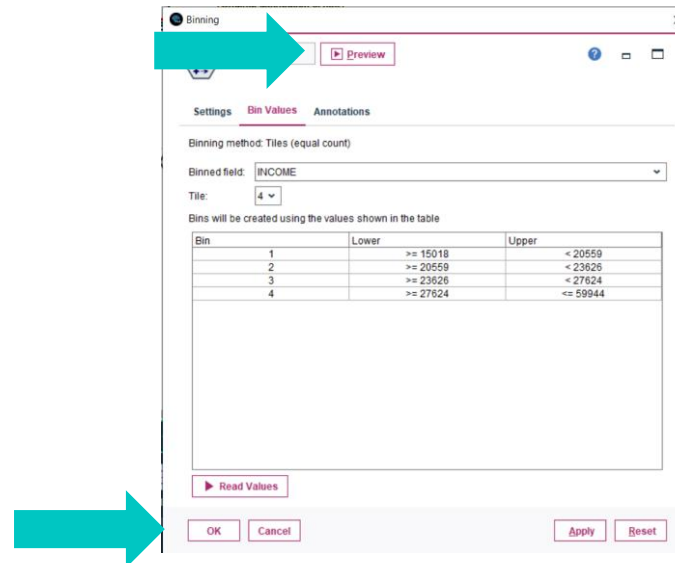
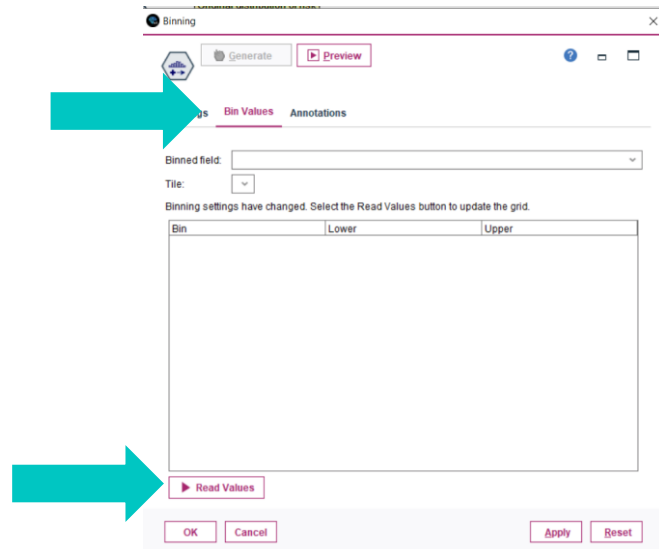
# Tech Tips – Bin Data

- To bin or group data go to the **Field Ops** palette. Select the **Binning** node and drag it onto the stream canvas. You can also double click the node to drop it onto the stream canvas. Once it is on the canvas you can connect it to your stream.
- Double click to open the node. Use the **Bin fields** drop down to select the field to bin. Select the binning method. Here we selected tiles and quartiles.



# Tech Tips – Bin Data

- Click on the **Bin Values** tab and click **Read Values** so that you can see how the data will be binned. Click **OK**. The new binned field will be available in your data set. Click on **Preview** to see your new field.





# Thank You

For more information  
please visit [spssanalyticspartner.com](https://spssanalyticspartner.com)