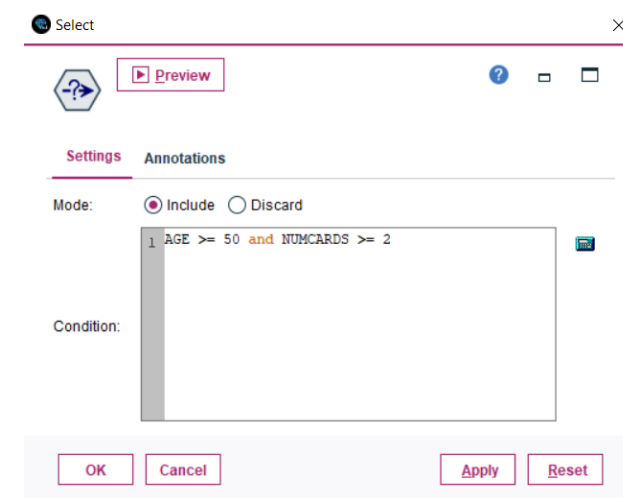
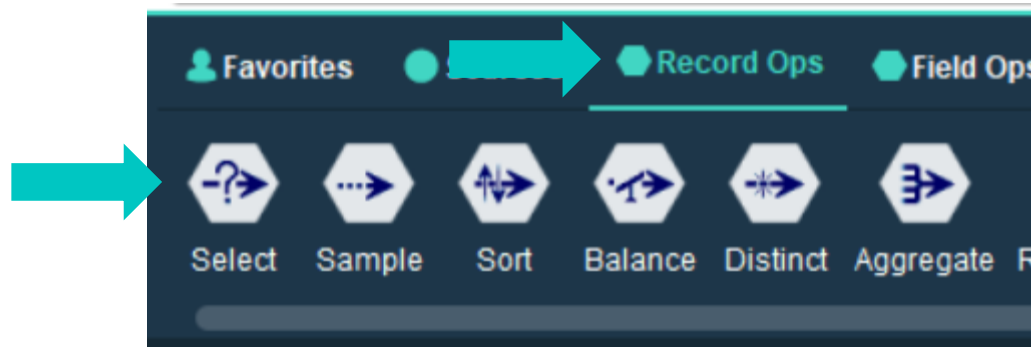


Selecting Records

Tech Tips - IBM SPSS Modeler

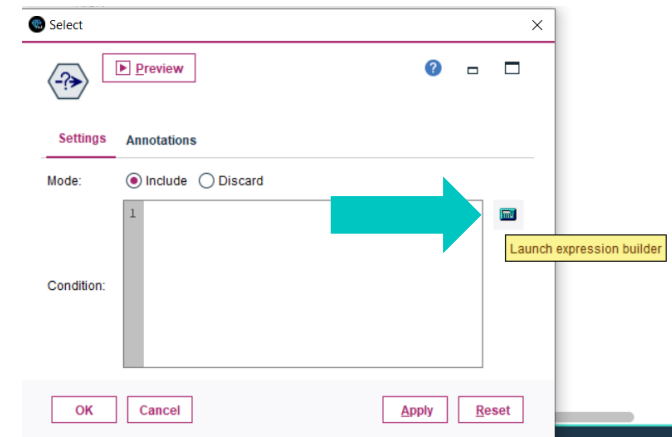
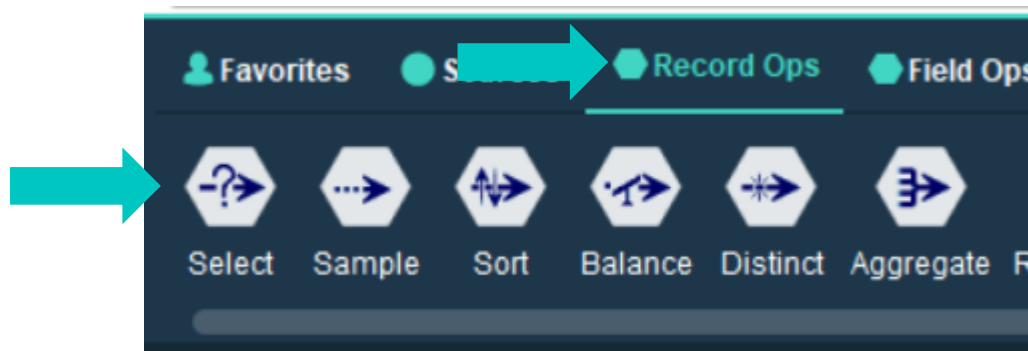
Tech Tips – Selecting Records

- Here’s a quick tip to select records in IBM SPSS Modeler.
- Sometimes you want to select records in a data file. For example, you want to select customers who are 50 and older and have 2 or more credit cards.
- The **Select** node makes selecting cases quick and easy and is located on the **Record Ops** palette.



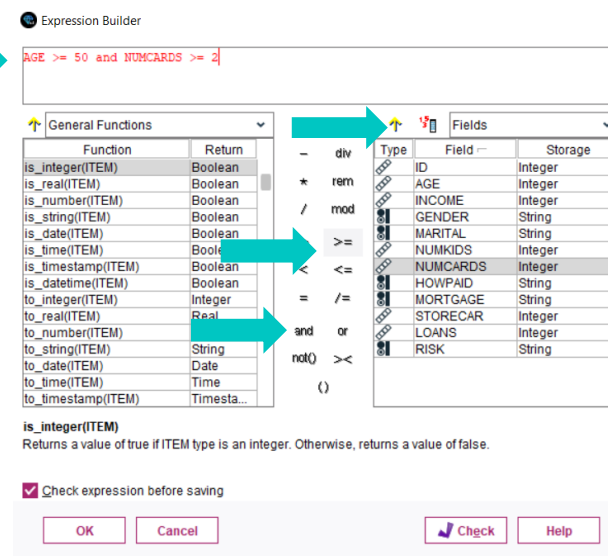
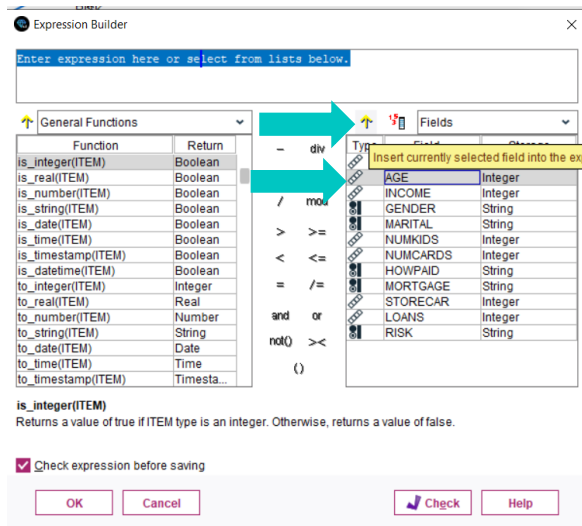
Tech Tips – Selecting Records

- To select cases go to the **Record Ops** palette. Select the **Select** node and drag it onto the stream canvas. You can also double click the node to drop it onto the stream canvas. Once it is on the canvas you can connect it to your stream.
- Double click to open the node. We want to select customers who are over 50 and have 2 or more credit cards. Click on the calculator icon - this is the **expression builder**.



Tech Tips – Selecting Records

- Once you click on the **Expression builder** you can make your selection. Click on 'AGE' and the **yellow arrow**. This will move 'AGE' into the Expression Builder. Select **>=** and type '50'. Click the **'and'** expression. Click on 'NUMCARDS' and use the **yellow arrow** to move this variable to the expression builder. Select **>=** and type 2. Now you will have the complete expression. Click **OK**. Now your data will contain only customers 50 and older with 2 or more credit cards. You can click on the **Preview** button on the **Select** node to view your data.



Preview from Select Node (12 fields, 10 records) #3

File Edit Generate

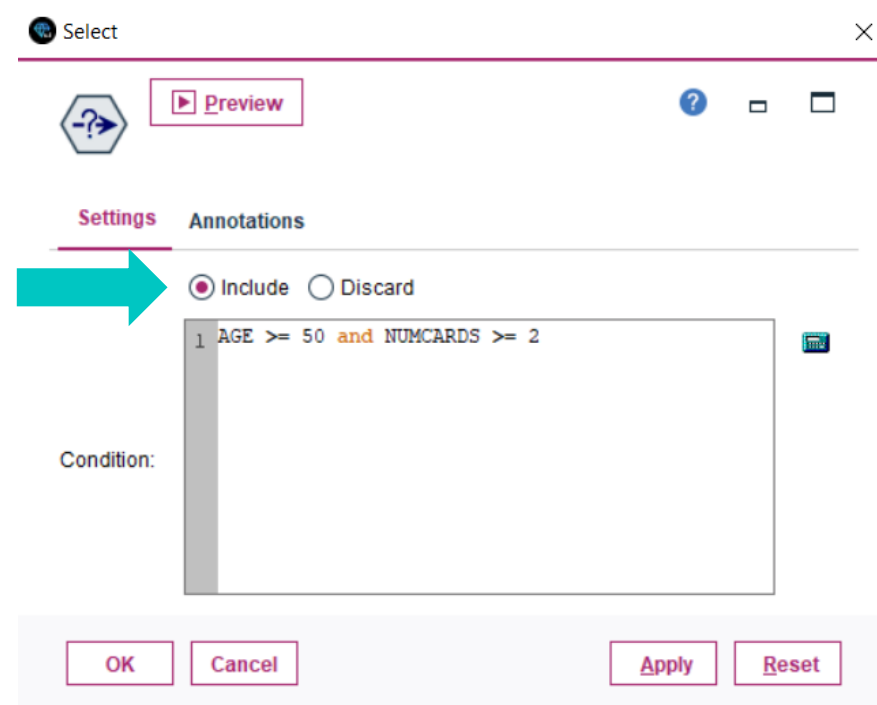
Table Annotations

	ID	AGE	NUMCARDS	INCOME	GENDER	MARITAL	NUMKIDS	HOWPAID
1	103733	50	6	29934	m	divsepwid	4	weekly
2	103714	50	6	29843	m	divsepwid	2	weekly
3	104102	50	3	29822	f	married	2	weekly
4	103715	50	6	29745	m	divsepwid	3	weekly
5	103727	50	5	29614	f	divsepwid	2	weekly
6	104107	50	4	29168	m	married	2	monthly
7	103736	50	5	28838	f	divsepwid	2	weekly
8	103739	50	5	28799	f	divsepwid	3	weekly
9	103732	50	6	28453	m	divsepwid	4	weekly
10	103713	50	6	28025	f	divsepwid	2	weekly

OK

Tech Tips – Selecting Records

- Note the **Select** node works in two ways. You can set a condition that will **Include** or **Discard** cases.





Thank You

For more information
please visit spssanalyticspartner.com