



Open Data Document Tool

Tech Tips - IBM SPSS Statistics

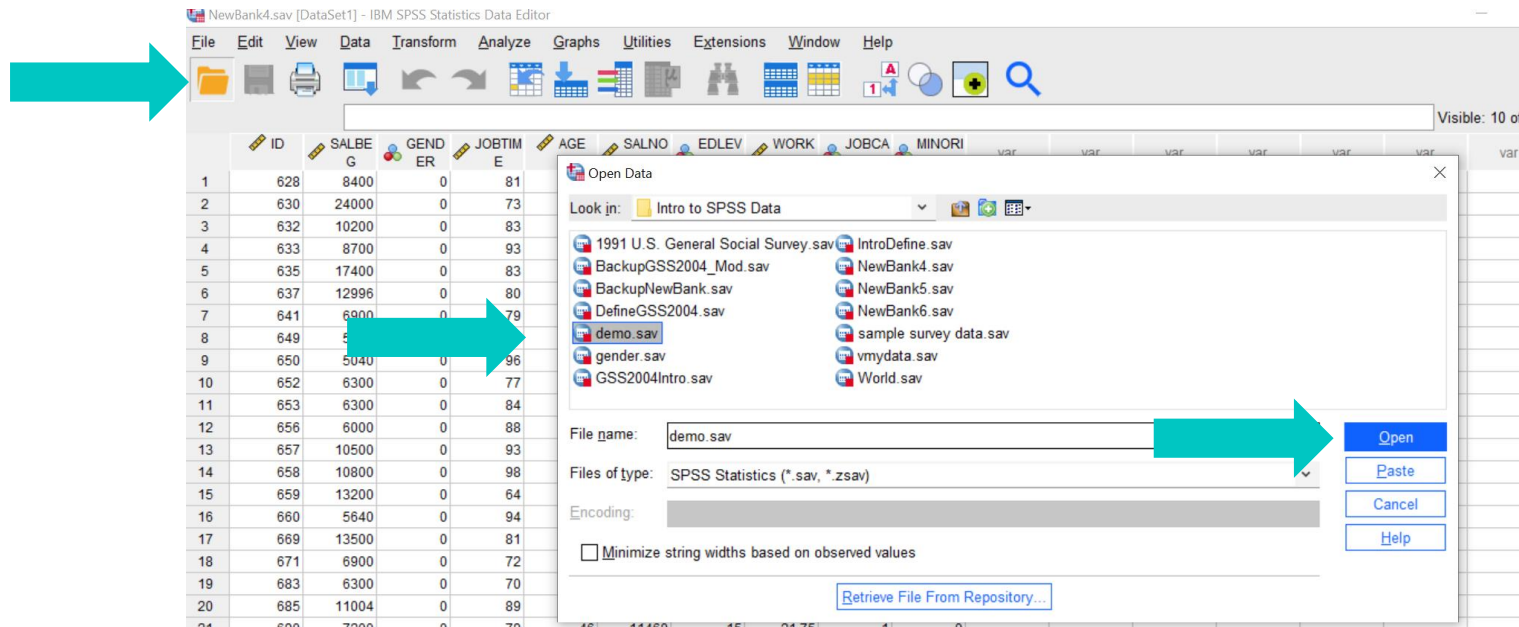
Tech Tips – Open Data Document Tool

- **Did you know that there is an easy way to open data in IBM SPSS Statistics?**
- The open data document tool sits on the toolbar beneath the menus. Users can hover a cursor over each tool to see a description.
- A folder represents the open data document tool.

| | ID | SALBEG | GENDER | JOBTIME | AGE | SALNOW | EDLEVEL | WORKEXP | JOBCAST | MINORITY | var |
|---|-----|--------|--------|---------|-----|--------|---------|---------|---------|----------|-----|
| 1 | 628 | 8400 | 0 | 81 | 28 | 16080 | 16 | .25 | 4 | 0 | |
| 2 | 630 | 24000 | 0 | 73 | 40 | 41400 | 16 | 12.50 | 5 | 0 | |
| 3 | 632 | 10200 | 0 | 83 | 31 | 21960 | 15 | 4.08 | 5 | 0 | |

Tech Tips – Open Data Document Tool

- To open a document using the Open Data Document tool, simply click on the folder.
- This will allow users to navigate to the data file that they need. Once the file is selected, click **Open** to open the data in IBM SPSS Statistics. Files of type allows users to select the type of file to open.





Thank You

For more information
please visit spssanalyticspartner.com